

# LOCALISING SDGs IN INDIA

## PROGRESS AT NATIONAL AND SUB-NATIONAL LEVELS

6 August 2019

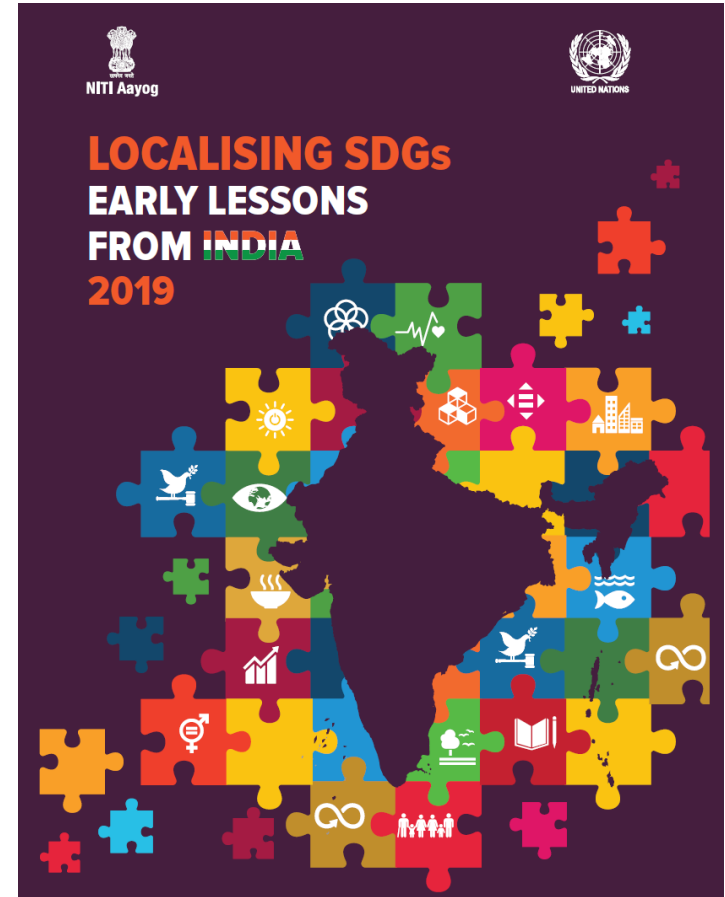
Sanyukta Samaddar

Adviser, NITI Aayog, Government of India



# LEARNINGS ON SDG LOCALISATION

- Lessons learnt from the experience of all states/ UTs in adopting, implementing, and monitoring SDGs in the following area:
  - Whole-of-government approach
  - Monitoring
  - Budgeting
  - Communication, awareness generation, and advocacy
  - Aligning local plans with SDGs
  - Capacity development
  - Reaching the furthest behind first
  - Partnerships
- Released at the High-Level Political Forum on Sustainable Development 2019 at UN headquarters in New York on 16 July 2019



# SDG INDIA INDEX

- **Overview**
  - Ranking of states/ UTs relative to each other based on their performance in SDGs
  - Goal-wise ranking of states/ UTs and overall ranking aggregating performance across all Goals
- **Objectives**
  - Support states/ UTs to identify priority areas
  - Enable states/ UTs to learn from peers
  - Highlight data gaps across the Goals
- **Version 1.0 of index**
  - Released in December 2018 - used 62 indicators across 13 Goals and 39 Targets
- **Version 2.0 of index**
  - Will cover all 17 Goals
  - To be released in September 2019

# SDG INDIA INDEX: METHODOLOGY

## Identification

Identified indicators based on state-wise acceptability and availability of data

## Normalisation

Rescaled each indicator; 0 denoting the worst performance and 100 denoting the best

## Weightage

Adopted equal weights for each indicator in line with the Internationally accepted practices

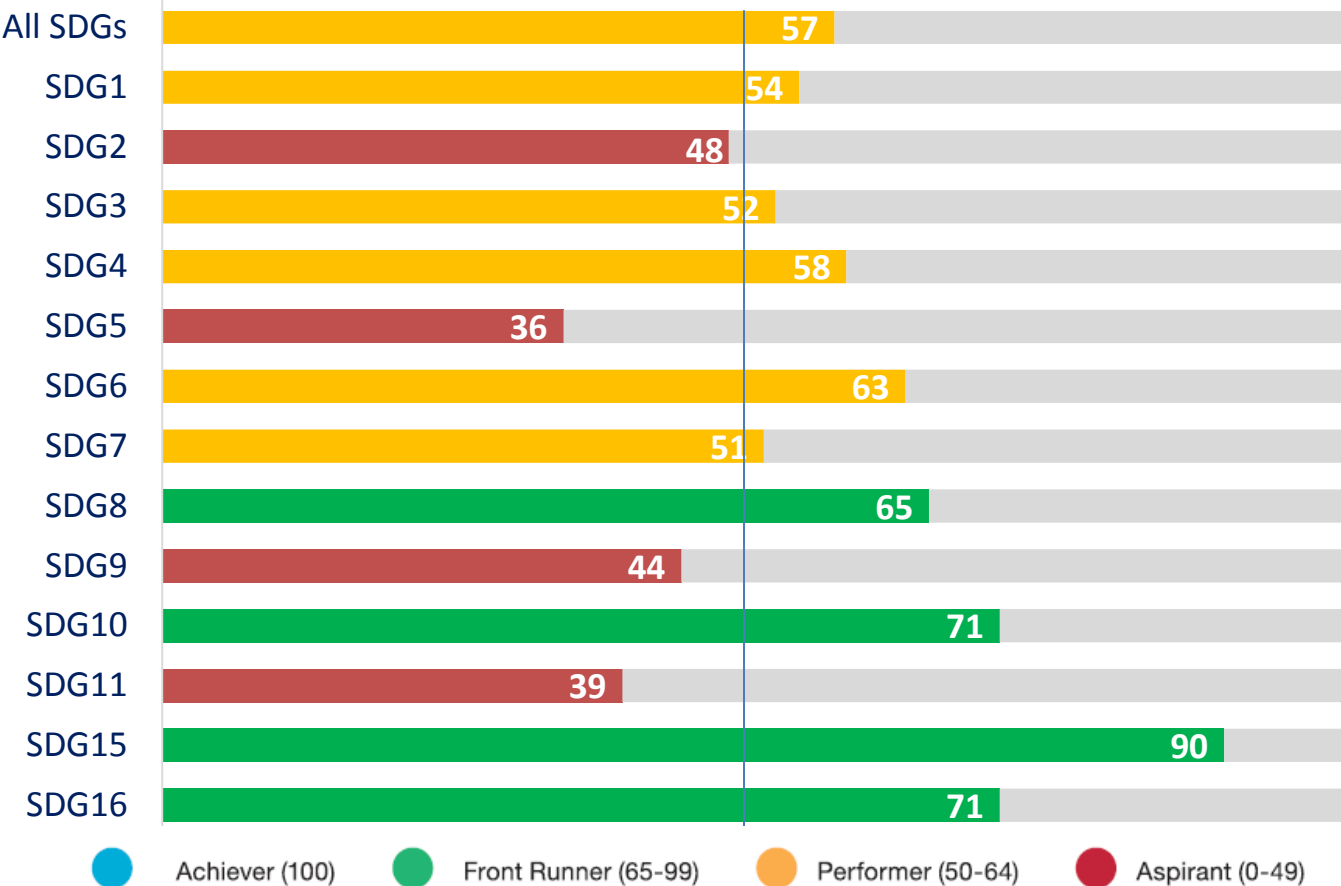
## Individual Goal Score

Computed each state's aggregate score by calculating arithmetic mean of normalised values of all indicators

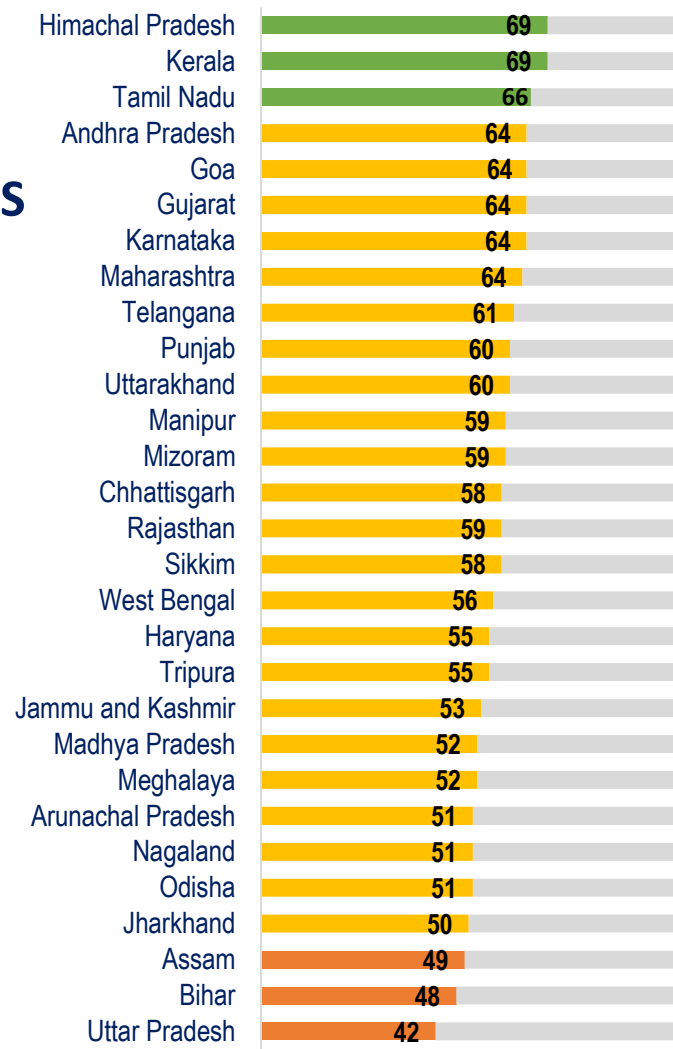
## Composite Score

Aggregated state's overall SDG Index score by averaging all Goal Scores

# INDIA'S INDEX SCORE: OVERALL AND SDG-WISE

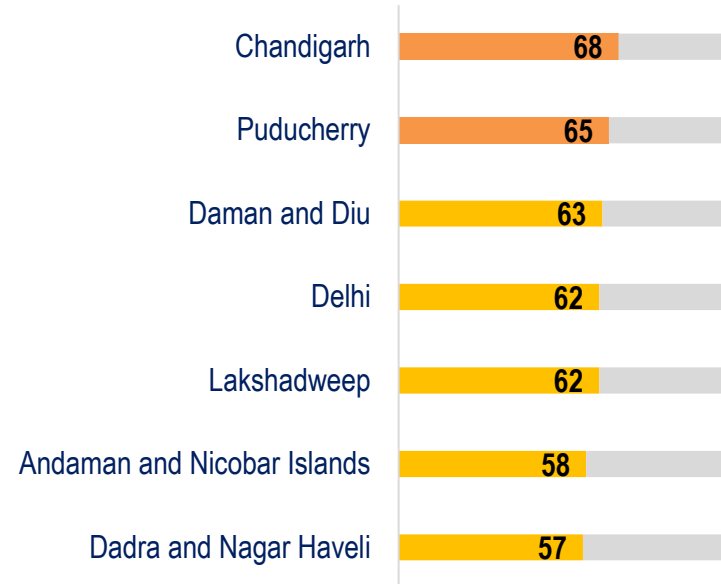


## STATES



# OVERALL SCORE

## UNION TERRITORIES



● Achiever (100)    
 ● Front Runner (65-99)    
 ● Performer (50-64)    
 ● Aspirant (0-49)

# THE WAY FORWARD

## DATA AND COVERAGE

- [SDG India Index](#) 2.0 covering all goals
- Usage of indicators with **higher frequency** data
- More **advanced** methods of data collection to be instituted – using tablets, mobile phones etc.

## CAPACITY BUILDING

- **Training** of state and district-level officers in SDG implementation and monitoring
- Handholding states/ UTs in SDG localization at **district-level** – ranking of districts

## DATA ANALYTICS

- Expand the scope from ranking to **analysis** of performance for mid-course correction

## GLOBAL STAGE

- UNGA 2019: SDG India Index 2.0
- HLPF 2020: Voluntary National Review

# INDICATORS FOR SDG INDIA INDEX 2.0



# GOAL 1: END POVERTY IN ALL ITS FORMS EVERYWHERE

S. No.	Target	Indicator	Year	Source
1	1.2	Percentage of population living below national poverty line	2011-12	NITI Aayog
2	1.3	Percentage of households with any usual member covered by any health scheme or health insurance	2015-16	MoHFW
3	1.3	Persons provided employment as a percentage of persons who demanded employment under Mahatma Gandhi National Rural Employment Guarantee Act (MGNREGA)	2018-19	MoRD
4	1.3	Proportion of the population (out of total eligible population) receiving social protection benefit under Maternity Benefit	2015-16	MoHFW
5	1.4	Number of homeless households per 10,000 households	2016-17	MoRD, MHA

## GOAL 2: END HUNGER, ACHIEVE FOOD SECURITY AND IMPROVED NUTRITION AND PROMOTE SUSTAINABLE AGRICULTURE

S. No.	Target	Indicator	Year	Source
1	2.1	Ratio of rural households covered under public distribution system (PDS) to rural households where monthly income of highest earning member is less than Rs.5,000	2011-12	MoRD
2	2.2	Percentage of children under age 5 years who are stunted	2015-16	MoHFW
3	2.2	Percentage of pregnant women aged 15-49 years who are anaemic	2015-16	MoHFW
4	2.2	Proportion of Low Birth Weight (LBW) among newborns	2015-16	MoHFW
5	2.2	Percentage of children under 5 years who are wasted	2015-16	MoHFW
6	2.2	Percentage of children age 6-59 months who are anaemic (Hb<11.0 g/dl)	2015-16	MoHFW
7	2.3	Rice, wheat and coarse cereals produced annually per unit area (Kg/Ha)	2016-17	MoA&FW
8	2.3	Gross Value Added in Agriculture per worker	2016-17	MoA&FW

# GOAL 3: ENSURE HEALTHY LIVES AND PROMOTE WELL-BEING FOR ALL AT ALL AGES

S. No.	Target	Indicator	Year	Source
1	3.1	Maternal Mortality Ratio	2014-16	MHA
2	3.1	Percentage of births attended by skilled health personnel (period 1 years)	2015-16	MoHFW
3	3.2	Under 5 mortality rate per 1000 live births	2015-16	MoHFW
4	3.2	Percentage of children aged 12-23 months fully immunized (BCG, Measles and three doses of Pentavalent vaccine)	2015-16	MoHFW
5	3.3	Annual notification of TB cases per 1 lakh population	2017	MoHFW
6	3.3	Total case notification rate of Tuberculosis		
7	3.3	Proportion of people living with HIV on antiretroviral therapy	2017	MoHFW
8	3.3	Number of new HIV infections per 1,000 uninfected population	2017	MoHFW
9	3.8	Number of governmental physicians, nurses and midwives per 1,00,000 population	2015-16	MoHFW
10	3.8	Percentage of currently married women aged 15-49 years who use any modern method of family planning	2015-16	MoHFW

## GOAL 4: ENSURE INCLUSIVE AND EQUITABLE QUALITY EDUCATION AND PROMOTE LIFELONG LEARNING OPPORTUNITIES FOR ALL

S. No.	Target	Indicator	Year	Source
1	4.1	Adjusted Net Enrolment Ratio at Elementary (Class 1-8) and Secondary (Class 9-10)	2016-17	MoHRD
2	4.1	Percentage correct responses on learning outcomes in language, mathematics and EVS for Class 5 students	2017	MoHRD
3	4.1	Percentage of children in the age group of 6-13 years who are out of school	2015-16	MoHRD
4	4.1	Average annual dropout rate at secondary level	2015-16	MoHRD
5	4.1	Percentage of students in grade III, V, VIII and X achieving at least a minimum proficiency level in terms of nationally defined learning outcomes to be attained by pupils at the end of each of above grades	2016	MoHRD
6	4.3	Proportion of male-female enrolled in higher education, technical and vocational education	2017-18	MoHRD
7	4.3	Gender Parity Index for tertiary education	2017-18	MoHRD
8	4.5	Enrolment rate of children with disabilities	2016-17	MoHRD
9	4.a	Proportion of schools with access to: single-sex basic sanitation facilities	2016-17	MoHRD
10	4.c	Proportion of trained teacher, by education level (elementary, secondary)	2015-16	MoHRD
11	4.c	Percentage of elementary and secondary schools with Pupil Teacher ratio less than/equal to 30	2016-17	MoHRD

## GOAL 5: ACHIEVE GENDER EQUALITY AND EMPOWER ALL WOMEN AND GIRLS

S. No.	Target	Indicator	Year	Source
1	5.1	Sex ratio at birth	2015-17	MHA
2	5.1	Average female to male ratio of average wages/salaries received per day by regular wage/salaried employees of age 15-59 years for rural and urban	2015-16	MoSPI
3	5.1	Rate of Crimes Against Women Per 100,000 Female Population	2016	MHA
4	5.2	Percentage of ever married women aged 15-49 years who have ever experienced spousal violence	2015-16	MoHFW
5	5.2	Proportion of sexual crime against girl children to total crime against children during the calendar year	2015-16	MHA
6	5.5	Percentage of seats won by women in the general elections to state legislative assembly	2019	ECI
7	5.5	Ratio of female labour force participation rate to male labour force participation rate	2017-19	MoSPI
8	5.6	Percentage of women aged 15-49 years using modern method of family planning	2015-16	MoHFW
9	5.a	Operational land holdings - gender wise	2015-16	MoA&FW

# GOAL 6: ENSURE AVAILABILITY AND SUSTAINABLE MANAGEMENT OF WATER AND SANITATION FOR ALL

S. No.	Target	Indicator	Year	Source
1	6.1	Percentage of population having safe and adequate drinking water in rural areas	2018	MoJS
2	6.2	Percentage of rural households with individual household toilets	2018-19	MoHFW
3	6.2	Percentage of districts verified to be ODF	2019	MoJS
4	6.2	Installed sewage treatment capacity as a proportion of sewage generated in urban areas	2016	MoEF&CC
5	6.2	Proportion of schools with separate toilet facility for girls	2016-17	MoJS
6	6.3	Percentage of industries (17 categories of highly polluting industries/grossly polluting industry/red category of industries) complying with waste water treatment as per CPCB norms	2017-18	MoEF&CC
7	6.4	Per capita storage of water (m <sup>3</sup> /person)	2015	MoJS, MHA
8	6.4	Percentage annual ground water withdrawal against net annual availability	2013	MoJS
9	6.6	Area under over-exploited blocks	2010-11	MoJS

# GOAL 7: ENSURE ACCESS TO AFFORDABLE, RELIABLE, SUSTAINABLE AND MODERN ENERGY FOR ALL

S. No.	Target	Indicator	Year	Source
1	7.1	Percentage of households electrified	2018-19	MoP
2	7.1	Percentage of households using clean cooking fuel	2015-16	MoHFW
3	7.3	Energy intensity measured in terms of primary energy and GDP		

# GOAL 8: PROMOTE SUSTAINED, INCLUSIVE AND SUSTAINABLE ECONOMIC GROWTH, FULL AND PRODUCTIVE EMPLOYMENT AND DECENT WORK FOR ALL

S. No.	Target	Indicator	Year	Source
1	8.1	Annual growth rate of Gross Domestic Product (GDP) per capita	2018	MoSPI
2	8.2	Annual growth in manufacturing sector	2016-17	MoSPI
3	8.2	Annual growth in agriculture sector	2016-17	MoSPI
4	8.3	Ease of doing business score (EODB)	-	MoCI
5	8.4	Per capita fossil fuel Consumption		
6	8.5	Average unemployment rate per 1000 persons for males and females	2015-16	
7	8.5	Labour force participation rate	2017-18	MoSPI
8	8.5	Wages earned by male-female in regular / casual employment	2011-12	MoSPI
9	8.10	Number of banking outlets 1,00,000 populations	2018	RBI
10	8.10	Percentage of households with a bank account	2018	RBI
11	8.10	Number of Automated Teller Machines (ATMs) per 1,00,000 population [2018-19]	2019	RBI
12	8.10	Proportion of women account holder in PMJDY	2019	MoF
13	8.b	Number of man days created under Mahatma Gandhi National Rural Employment Guarantee Act	2019	MoRD



# GOAL 9: RESILIENT INFRASTRUCTURE, PROMOTE INCLUSIVE AND SUSTAINABLE INDUSTRIALIZATION AND FOSTER INNOVATION

S. No.	Target	Indicator	Year	Source
1	9.1	Percentage of targeted habitations connected by all-weather roads under Pradhan Mantri Gram Sadak Yojana [2018-2019]	2018-19	MoRD
2	9.2	Manufacturing employment as a proportion of total employment	2009-10	MoSPI
3	9.3	Percentage of Credit Flow to MSMEs (as a percentage of Total Adjusted Net Bank Credit)	-	MoMSME
4	9.c	Number of mobile connections per 100 persons in rural and urban area (Mobile Tele density)	2019	MoC, MHA
5	9.c	Number of internet subscribers per 100 population	2019	MoC
6	9.c	Percentage of Gram Panchayats covered under Bharat Net	2019	MoC

# GOAL 10: REDUCE INEQUALITY WITHIN AND AMONG COUNTRIES

S. No.	Target	Indicator	Year	Source
1	10.1	Palma Ratio based on household expenditure in urban India	2011	MoSPI, MHA
2	10.1	Palma Ratio based on household expenditure in rural India	2011	MoSPI, MHA
3	10.1	Growth rates of household expenditure per capita among the bottom 40 per cent of the population and the total population	2011-12	MoSPI
4	10.2	Proportion of SC/ST persons in state legislative assemblies	2019	ECI
5	10.2	Ratio of transgender labour force participation rate to male labour force participation rate	2016	MoL&E
6	10.2	Percentage of people living below 50 percent of median per capita household expenditure	2011-12	MoSPI
7	10.4	Percentage of Scheduled Caste Sub Plan fund utilized	2013-14	NITI Aayog
8	10.4	Percentage of Tribal Sub Plan fund utilized	2013-14	NITI Aayog

## GOAL 11: MAKE CITIES AND HUMAN SETTLEMENTS INCLUSIVE, SAFE, RESILIENT AND SUSTAINABLE

S. No.	Target	Indicator	Year	Source
1	11.1	Houses completed under Pradhan Mantri Awas Yojana (PMAY) as a percentage of net demand assessment for houses	2018-19	MoRD, MoHUA
2	11.1	Percentage of urban households living in slums	2011	MHA
3	11.6	Percentage of wards with 100% door to door waste collection	2019	MoHUA
4	11.6	Percentage of waste processed	2019	MoHUA

## GOAL 12: ENSURE SUSTAINABLE CONSUMPTION AND PRODUCTION PATTERNS

S. No.	Target	Indicator	Year	Source
1	12.2	Percentage ground water withdrawal against availability	2013	MoJS
2	12.5	Quantity of hazard waste in MMT	2016-17	MoEF&CC
3	12.5	Processed quantity of hazard waste sent to recycle to hazard waste generated	2016-17	MoEF&CC
4	12.5	Solid waste treated against solid waste generated	2015-16	MoEF&CC
5	12.5	Percentage of sewage treated against generated	2015	MoEF&CC
6	12.5	Percentage of municipal corporations banning use of plastic	2017-18	MoEF&CC

## GOAL 13: TAKE URGENT ACTION TO COMBAT CLIMATE CHANGE AND ITS IMPACT

S. No.	Target	Indicator	Year	Source
1	13.1	Percentage crop area affected due to extreme weather events	-	MoA&FW
2	13.2	Renewable share of installed generating capacity	2019	MoP
3	13.2	Percentage change in Forest Area coverage	2017	MoEF&CC
4	13.2	Co2 saved from LED bulbs	2019	MoP
5	13.2	Percentage of Solar capacity (SPV) installed	2017	MNRE

## GOAL 14: CONSERVE AND SUSTAINABLY USE THE OCEANS, SEAS AND MARINE RESOURCES FOR SUSTAINABLE DEVELOPMENT

S. No.	Target	Indicator	Year	Source
1	14.1	Percentage change in use of nitrogen fertilizers in the coastal states	2015-16	MoSPI
2	14.1	Percentage Ph level of rivers	2015	MoSPI
3	14.1	Percentage of Dissolved oxygen in rivers	2015	MoSPI
4	14.1	Percentage of BOD in river	2015	MoSPI
5	14.1	Coastal Water Quality Index	2015-16	MoSPI
6	14.2	Percentage change in area under mangroves	2017	MoEF&CC

# GOAL 15: TO PROTECT, RESTORE AND PROMOTE SUSTAINABLE USE OF TERRESTRIAL ECOSYSTEMS, SUSTAINABLY MANAGE FORESTS, COMBAT DESERTIFICATION, AND HALT AND REVERSE LAND DEGRADATION AND HALT BIODIVERSITY LOSS

S. No.	Target	Indicator	Year	Source
1	15.1	Percentage of total land area covered under forest	2017	MoEF&CC
2	15.1	Decadal change in extent of water bodies within forests from 2005 to 2015	2017	MoEF&CC
3	15.1	Percentage of Tree outside forest (TOF) in total forest cover	2017	MoEF&CC
4	15.2	Percentage change in area of desertification	2016	ISRO, MoEF&CC
5	15.2	Total tree cover achieved outside forest area	2017	MoEF&CC
6	15.3	Percentage increase in net sown area	2017	MoA&FW
7	15.4	Increase in forest / vegetative cover in mountain areas	2017	MoEF&CC
8	15.7	Percentage reduction in traded wildlife that was poached or illicitly trafficked	2018	MoEF&CC

## GOAL 16: PROMOTE PEACEFUL AND INCLUSIVE SOCIETIES FOR SUSTAINABLE DEVELOPMENT, PROVIDE ACCESS TO JUSTICE FOR ALL AND BUILD EFFECTIVE, ACCOUNTABLE AND INCLUSIVE INSTITUTIONS AT ALL LEVELS

S. No.	Target	Indicator	Year	Source
1	16.1	Reported murders per 1 lakh population	2016	MHA
2	16.1	Proportion of population subjected to physical, psychological or sexual violence in the previous 12 months	2016	MHA
3	16.2	Reported cognizable crimes against children per 1 lakh population	2016	MHA
4	16.2	Number of victims of human trafficking per 100,000 population, by sex, age and form of exploitation	2016	MHA
5	16.2	Number of victims rescued from human trafficking per 100,000 population, by sex, age and form of exploitation	2016	MHA
6	16.3	Estimated number of courts per 10 Lakh persons	2017	MoJ MHA
7	16.5	Estimated reported corruption crimes per 1 crore population	2016	MHA
8	16.6	Number of Government services provided online to citizens	2019	MEITY
9	16.9	Percentage of births registered	2016	MHA
10	16.9	Percentage of population covered under Aadhaar	2019	UIDAI

# THANK YOU

---

*“Sustainable development of one-sixth of humanity will be of great consequence to the world and our beautiful planet. It will be a world of fewer challenges and greater hope; and, more confident of its success.”*

*“The UN Sustainable Development Goals put us on the path of equality, equity and climate justice. **While we are doing everything that is required of us, we expect that others also join in to fulfil their commitments.**”*

Prime Minister Narendra Modi

